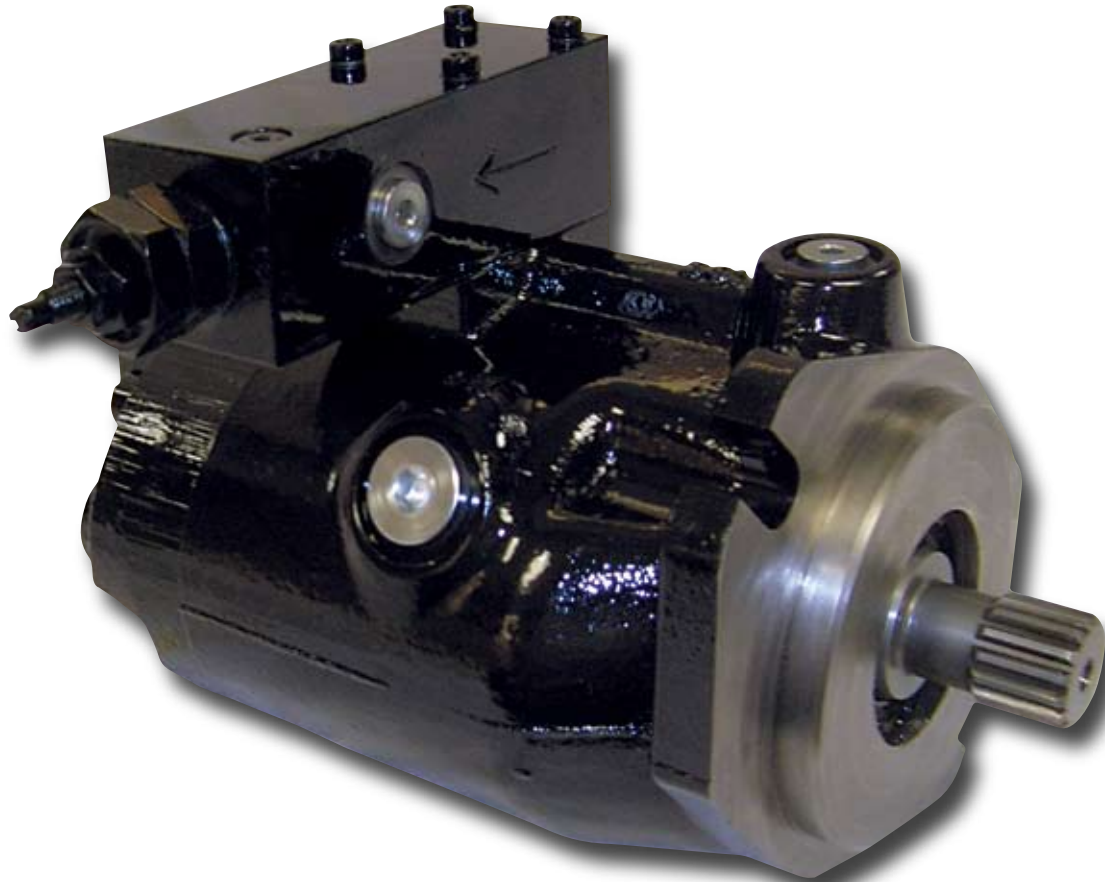


Old literature for obsolete A-mod units.  
Replaced by B-mod. Some controls have been  
updated to different model codes see B-design  
catalog.



## Hydraulic P1/PD Piston Pumps

A-Type Mechanical and Remote Control  
Pilot Operated Compensator

aerospace  
climate control  
electromechanical  
filtration  
fluid & gas handling  
**hydraulics**  
pneumatics  
process control  
sealing & shielding



ENGINEERING YOUR SUCCESS.

# A-Type Remote Control

P1/PD Hydraulic Piston Pumps  
Feature new Streamlined Compensators

Parker Hannifin's hydraulic P1/PD series piston pumps will now feature the new "A" series compensator. Following the success of the PV plus series pumps, all models of the P1/PD will now use the "A" compensator for pilot operated and remote compensation options.

Previous P1/PD models featured the "R" style compensator that required three separate bodies that were stacked together to form a single module. The new "A" compensator takes advantage of new spool and dart design that allows Parker to provide two functions in one body. The immediate benefit is realized with a smaller foot-print and less

weight. Additionally, this design allows for external signals to be fed to the pump more cleanly.

The new "A" style compensator will provide extremely stable performance while providing max pressure control. The chart on the adjacent page shows the new letter designations.

The addition of the "A" series compensator, will continue to enhance the performance value of the P1/PD piston pump for application in both the mobile and industrial markets. The new compensator is available on existing 60, 75, 100 and 140cc pumps and on soon to be released 18, 28 and 45cc displacements.

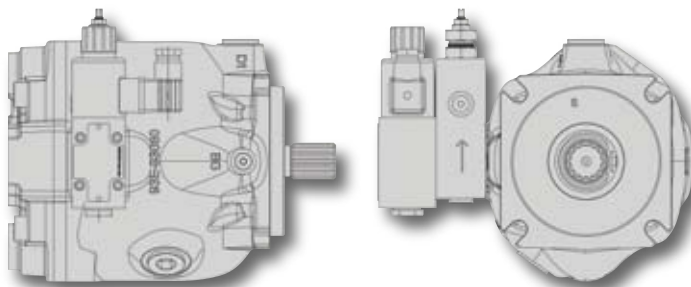


**NEW  
A-Type Design**



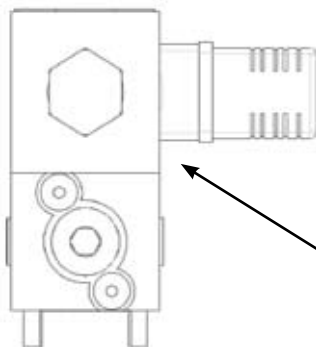
**Original  
R-Type Design**

## Remote Compensator AE\* or AF\*

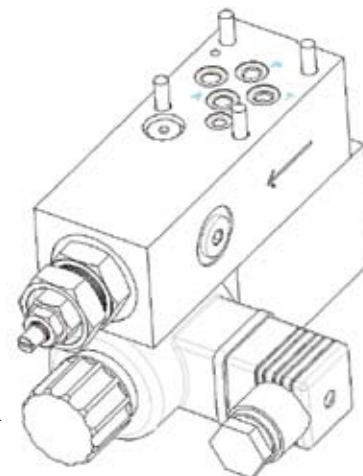


**AE\* or AF\* Control  
CW Orientation  
P\*075 Shown**

Pilot operated pressure limiter with electrical adjustment "AE" or "AF"

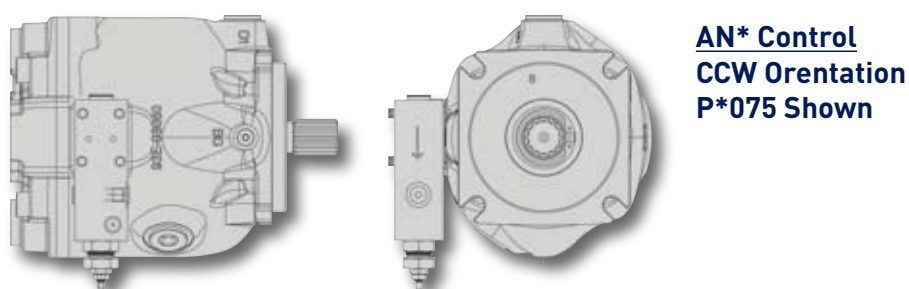
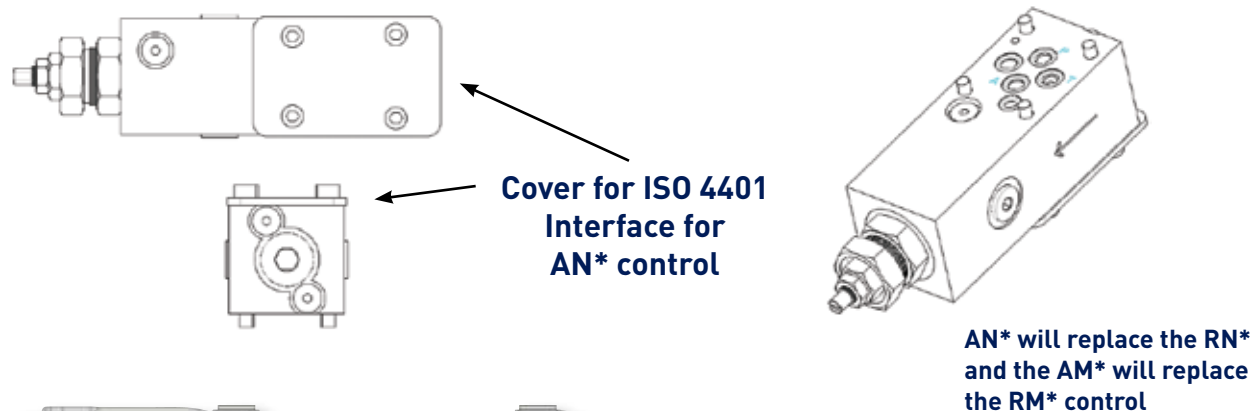


**Proportional  
Pressure Valve**

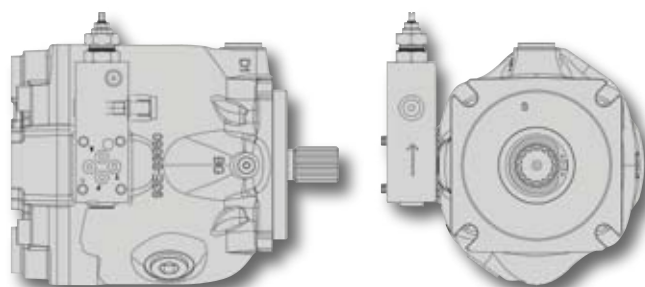


AE\* is a 12V option, and the AF\* is the same, except 24V

## Remote Compensator AN\* & AM\*



Pilot operated pressure limiter with mechanical adjustment and ISO 4401 interface "AN"



The AM\* control will not have the ISO 4401 Interface

Pilot operated pressure limiter with mechanical adjustment and vent port "AM"

### Letter Designations

Old Letters	New Letters	Description
RN	<b>AN</b>	Pilot operated control with ISO-4401 (NG 6) interface and shipping cover.
RM or RH	<b>AM</b>	Pilot operated pressure limiter control with mechanical adjustment and vent port.
RE	<b>AE</b>	Pilot operated pressure limiter control with proportional electronic adjustment and is a 12 volt dc option.
RF	<b>AF</b>	AF is the 24 vdc version of AE.



Parker Hannifin Corporation  
**Hydraulic Pump Division**  
14249 Industrial Parkway  
Marysville, OH 43040 USA  
phone 937 644 4435  
fax 937 642 3639  
[www.parkerhpd.com](http://www.parkerhpd.com)